

PRODUCT INFORMATION

PRODUCT: Sharptech De-Scaler **EQUIPMENT CODE:** SP1-7

Designed and manufactured in house the Sharptech De-Scaler is the only known remote controlled vertical shaft de-scaling machine in the world. Kiln Services Australia developed this machine realising a need to limit manual demolition in vertical vessels.

The Sharptech De-Scaler (named after the inventor David John Sharp) has been used successfully on many projects in Western Australia and in all cases has proven to be an efficient machine as compared with conventional methods of demolition. In some cases up to twenty times more efficient.

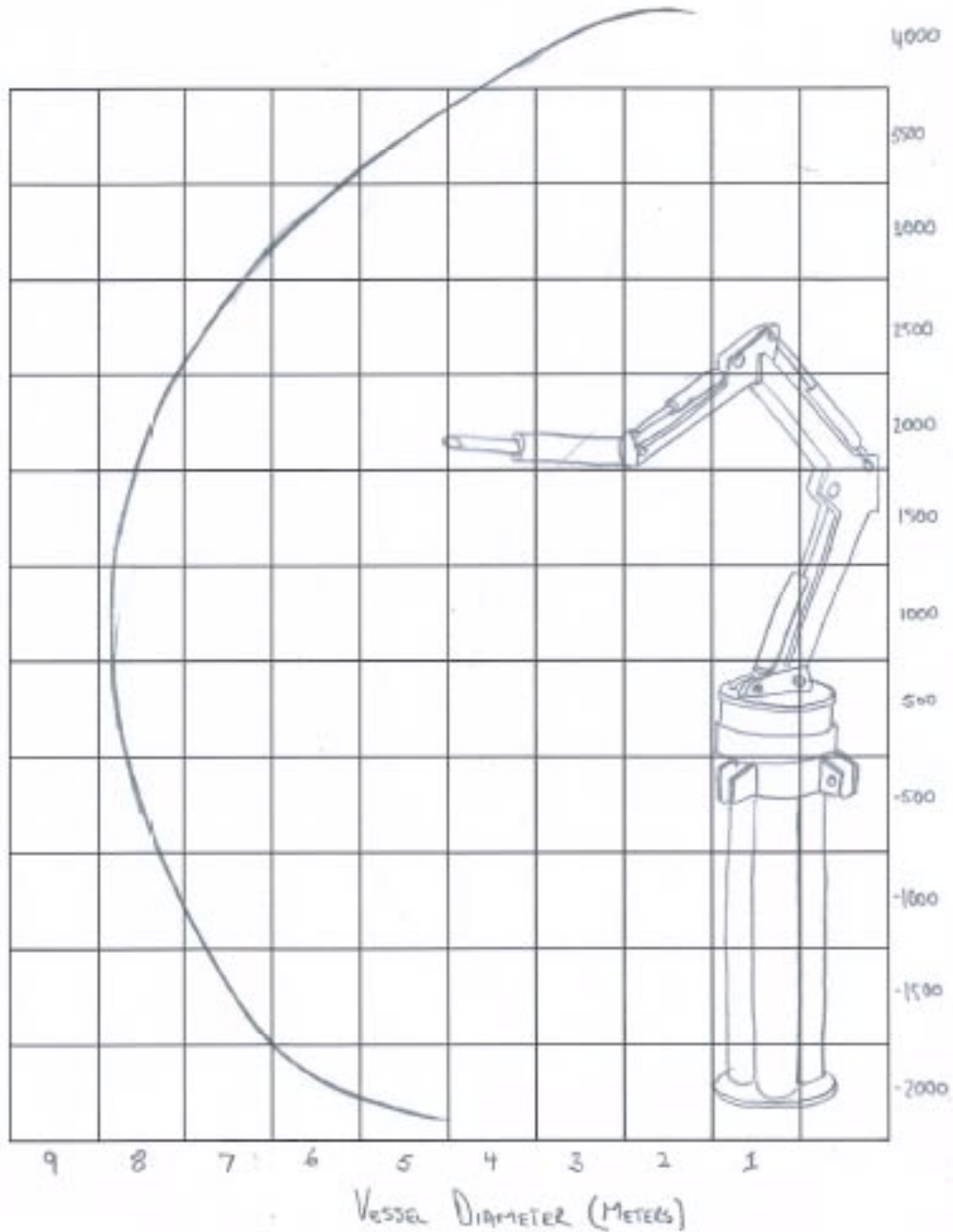
The Sharptech De-Scaler has a large reach capacity of up to 8700mm (diameter), and can fold up to fit in very small openings (as small as 1000mm). This makes it ideal for many types of vessels including, chlorinators, stacks, calciners (with removal able domes), and other open top tanks.



Sharptech De-Scaler - Specifications

Height – Boom Up	3800mm
Width – for installation	1000mm
Leg Span – Min	2700mm
Leg Span – Max	7200mm
Power requirement	32amp 3 Phase Power
Generator Size	80Kva Minimum
Weight with Attachment	1800kg
Hammer	Montabert Z92 Pneumatic
Compressor Size	140CFM
Control System	Radio Remote

Sharptech De-Scaler - Reach Diagram





Sharptech De-Scaler – Arm Up no Attachment

For more information on the Sharptech De-Scaler, please contact Ben Burchill